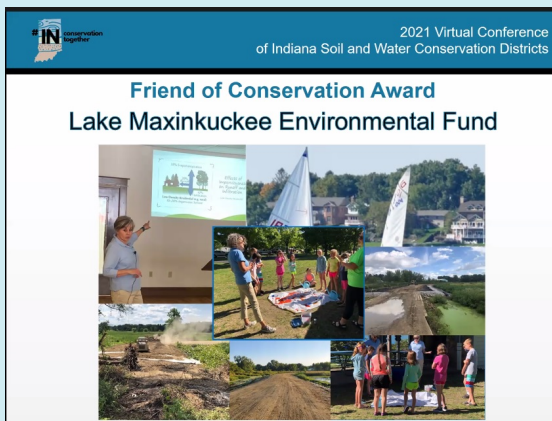


*Working towards the preservation of an ecologically sound Lake Maxinkuckee and its surrounding watershed*

# WELCOME 2021



[Full Press Release](#)

## LMEF Recognized

### *2020 Friend of Conservation*

During the closing ceremony of the annual conference of [Indiana Soil & Water Conservation Districts](#), nine people and organizations were recognized for their efforts in protecting Indiana's natural resources.

Among those recognized was Lake Maxinkuckee Environmental Fund for their outreach in the community, encouraging conservation practices and lake education.

## Kline Levee Reconstruction Project in National Magazine

The December issue of [Stormwater](#) magazine featured an article about the Kline Levee Project.

*"By leveraging relationships with state and local government, along with private resources, LMEF was ultimately able to complete this construction project that will protect Lake Maxinkuckee for generations to come."*



[Read Full Article](#)

## January Boys & Girls Club *Environmental Club*

Topic: Animal Adaptations

Tested "blubber" gloves to determine insulating properties of



### Cold Adaptations

**Lesson:** Discuss different ways animals stay warm then investigate the insulating properties of blubber. Experiment with different substances to predict and determine which ones works best and why.

**Supplies:**

- Quart size freezer bags
- Duct Tape
- Various substances to test
- Bucket of Ice Water

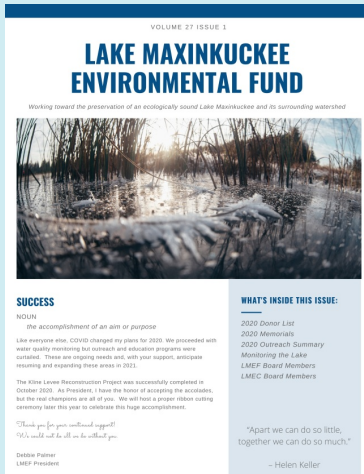
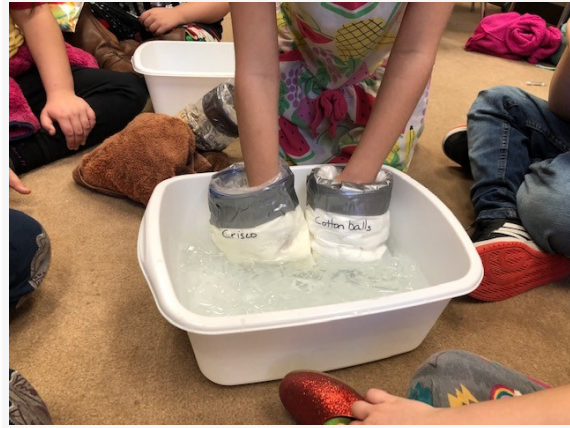


**Instructions:**

- Fill a freezer bag (make sure the bag is big enough to fit your whole hand inside) with three or four heaping spoonfuls of shortening.
- Put your hand inside a second freezer bag of the same size as the first and push it into the shortening filled bag.
- Spread the shortening around the freezer bags until the inner bag is mostly covered.
- Fold the top of the inner freezer bag over the top of the outer bag, keeping the shortening between the two. Duct tape the fold in place so the shortening does not come out.
- Place your hand inside the "blubber" glove and then place both hands in the ice water. Does the bare hand feel different than the hand inside the "blubber" glove? Why or why not?
- Experiment with other substances to test insulating properties: peanut butter, cotton balls, lard, sand etc. Anything you can put in a freezer bag!



various substances.



## Newsletters

We are going to transition to electronic newsletters by the end of the year. You can always choose to have the printed newsletter mailed to you but you will need to opt in. This will save LMEF approximately \$3,500 per year!

If you are receiving this email, your correct email address is on file with the office. You don't need to do anything to continue receiving LMEF news.

January 2021 Newsletter



Visit our website