



PO Box 187
116 N. Main Street
Culver, IN 46511

www.lakemax.org

Working towards the preservation of an ecologically sound Lake Maxinkuckee and its surrounding watershed

Goodbye Summer Hello Fall

Labor Day, and the unofficial end of summer is here, but that doesn't mean the end of days on the lake.

September is sometimes the best month with warm sunny days for walks and cool evenings for bonfires.



FallFest is October 7th & 8th. We are already working on our scarecrow!



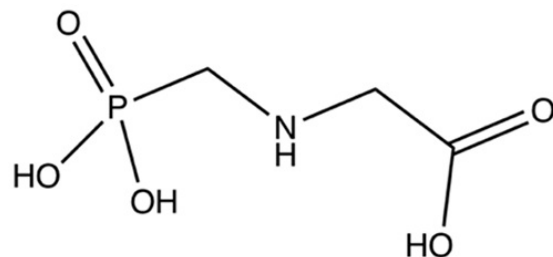
Horrible(?) Gelatinous Blob

Have you seen them? They are beginning to lose their chlorophyll and are turning white. Quite interesting.

[Read More Here](#)

Rounding Up Roundup

To protect the environment, do not allow to enter or run off into storm drains, drainage ditches, gutters or surface waters. Applying this product when rain is not predicted for the next 24 hours will help to ensure that rain does not wash off the treatment area.



[Read Full Article](#)

Eurasian Watermilfoil Update

30 acres of invasive Eurasian Watermilfoil was found in the lake during the 2021 Aquatic Vegetation Survey. The decision was made to treat with the herbicide, ProcellaCOR. You can read more about the reasons for that decision [here](#).

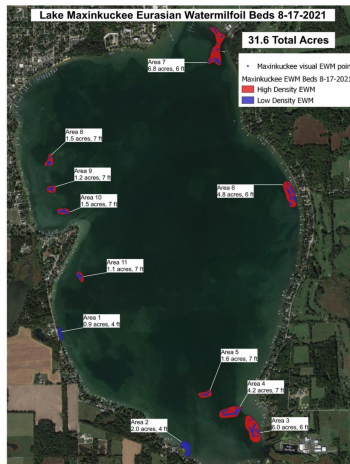
In order to optimize the herbicide application, Aquatic Weed Control made multiple trips this summer to check on the growth. Surprisingly, the milfoil did not re-emerge as expected and just under 14 acres needed to be treated. This was completed on August 25th, using far less chemical than originally planned and at a considerable savings.

LMEF will continue to be conservative in its approach to aquatic vegetation control and will consult with the DNR and licensed private companies to implement a long-term plan that is in the best interest of the lake, lakeshore property owners and the community.

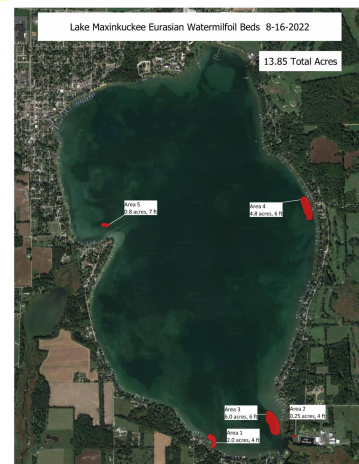


Figure 4. Lake Maxinkuckee, Eurasian watermilfoil location, June 7, 2011.

2011



2021



2022

Aquatic Plant Survey Completed



Bladderwort found along South Shore

Survey Completed 8/16/2022

Interesting observation:

Very little plant growth in the lake. For some reason, neither the invasive nor the native plants were in abundance.

Water clarity was outstanding for this time of year.

Aquatic Plant Surveys can be beneficial for a variety of reasons.

[More About Aquatic Plant Surveys](#)

[Sign Up to Receive Lake Max Messages](#)

Articles Concerning the Lake and Watershed



[Visit our website](#)