



PO Box 187  
116 N. Main Street  
Culver, IN 46511

[www.lakemax.org](http://www.lakemax.org)

*Working towards the preservation of an ecologically sound Lake Maxinkuckee  
and its surrounding watershed*



## Chesser Endowment Fund Update

Allen Chesser joined the Lake Maxinkuckee Environmental Council in 1998 and was elected Chairman in 2004. He continued to actively serve on the Council and the Fund, rarely missing a meeting, until his passing in December 2022.

LMEF, in partnership with First National Bank of Monterey, established an Allen Chesser Summer Intern Scholarship Permanent Endowment Fund to honor his

memory. These funds will help us expand the length and scope of our current summer internships, with the possibility of including graduate students and additional research projects.

**Thank you to all who have already contributed.** Allen would be so pleased to be supporting the education of a college student while helping Lake Maxinkuckee.

**Please consider giving to this worthwhile cause as you make your year-end charitable contributions.**

## Don't Throw Your Leftover Pumpkins in the Trash

Pumpkins, and other food waste, can't break down into the soil as they would naturally when discarded in the landfill, and instead release methane gas, which contributes to climate change.

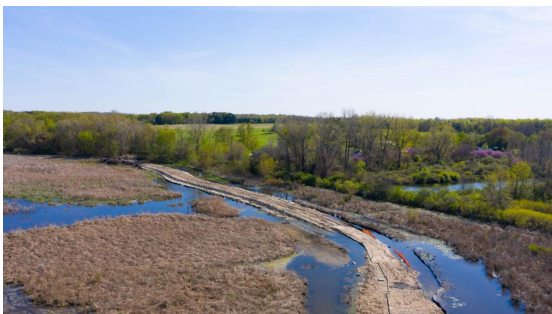
Sustainable ways to dispose of pumpkins:

- Cut them up and leave them for wildlife.
- Cut them up and compost them.
- Check to see if your community has a Pumpkin Smashing event. If not, start one!
- Find recipes to cook/bake something.



## Catch Up on Your Reading

### More Wetland Woes



According to the September issue of Izaak Walton League's "Conservation Currents", the Environmental Protection Agency and the Army Corps of Engineers have released a final rule amending the January 2023 "Waters of the United States" (WOTUS) rule to conform with the Supreme Court's decision in Sackett v. EPA. Both agencies had to strike key elements of the

### Keeping Tabs on the Lake Level





January 2023 WOTUS rule.

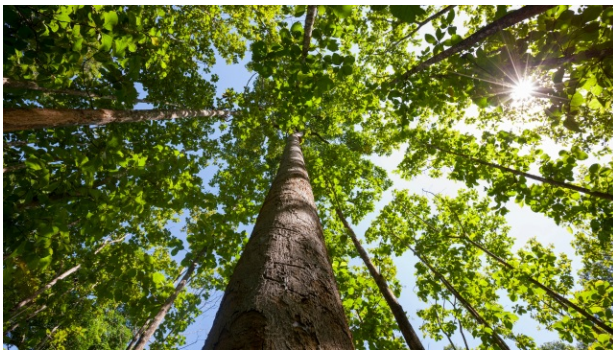
The new ruling basically says that wetlands only have protection if they are **DIRECTLY** and **PERMANENTLY** connected to lakes, rivers or streams.

LMEF, Culver Academies and the Town of Culver have a joint agreement with USGS to continue to fund the cost of operating and maintaining the gauge near the public landing on the west shore.

[Read More](#)

[Read More](#)

## Planting One Million Trees



Governor Eric J. Holcomb, in his 2020 State of the State Address, charged the Indiana Department of Natural Resources (DNR) with planting 1 million trees during the next five years.

With the additional 253,400 seedlings that were planted this past spring, the four-year planting total is now 964,900. ***It's scheduled to reach the 1 million goal next spring.***

More information about planting locations, the types of trees and wildlife benefits can be found [here](#).

## Fall Landscaping

This information was in last month's newsletter, but it is worth repeating!

*One of the most valuable things you can do to support pollinators and other invertebrates is to provide them with the winter cover they need.*



This time of year, many people



buy mums to give their property some fall color. The down-side is that mums, while beautiful, do not provide for wildlife. They are cultivars and hybrids from Europe and Asia.

Want a native alternative to mums? One that will bloom every fall with great benefits for the local pollinators?

### Plant Asters!

Smooth Blue Aster (Symphyotrichum laeve) has bright periwinkle blooms that will contrast well against autumn colors of orange and yellow.

For some reason, we just can't help ourselves from wanting to tidy up the garden at the end of the season.

Raking, mowing and blowing away a bit of nature that is **essential to the survival of moths, butterflies, snails, spiders, and dozens of arthropods.**

Save the Stems

Leave the Leaves

Sign Up to Receive [Lake Max Messages](#)  
Articles Concerning the Lake and Watershed

Visit our website



Lake Maxinkuckee Environmental Fund | P.O. Box 187, 116 N. Main Street, Culver, IN 46511

[Unsubscribe\\_lmec@lakemax.org](mailto:Unsubscribe_lmec@lakemax.org)

[Update Profile](#) | [Constant Contact Data Notice](#)

Sent by [lmec@lakemax.org](mailto:lmec@lakemax.org) powered by



Try email marketing for free today!